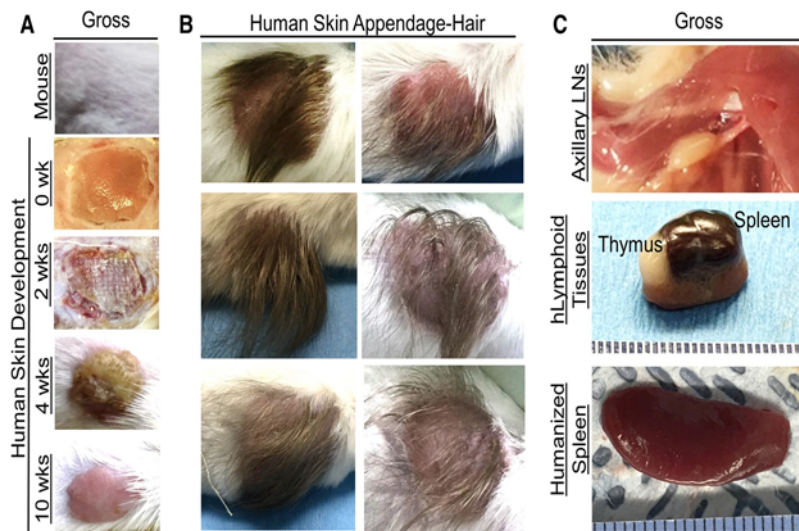


Aborted Baby Tissue-Procurement Relationship Between the University of Pittsburgh, UPMC and Planned Parenthood

In September 2020, researchers at University of Pittsburgh published their work on the development of humanized mice and rats. Scalps were taken from humans aborted at the gestational age of 18 to 20 weeks of pregnancy at the Magee-Women’s Hospital and the University of Pittsburgh Health Sciences Tissue Bank. In the scalp grafts, fine human hair can be seen growing long and dark surrounded by the short white hairs of the mouse. The images literally show a patch of baby hair growing on a mouse’s back. Figure 1¹



KEY POINTS

Aborted babies are being scalped and grafted onto rodents, and lymphoid tissues and hematopoietic stem cells from the liver of the aborted baby are being grafted onto rodents.

University of Pittsburgh (Pitt) and University of Pittsburgh Medical Center (UPMC) jointly operate a Pitt Tissue Bank, which supplies aborted fetal organs and tissue to Pitt researchers.

Pitt/UPMC has multiple Planned Parenthood abortion providers on staff performing abortions and training medical students to do so.

Planned Parenthood abortion providers admitted on undercover camera that they provide fetal tissue to the Pitt/UPMC fetal tissue bank.

1) **University of Pittsburgh (Pitt) and University of Pittsburgh Medical Center (UPMC) jointly operate a Pitt Tissue Bank, which supplies aborted fetal organs and tissue to Pitt researchers**

- *Nature* study: “Human fetal tissues were obtained from the Health Sciences Tissue Bank at the University of Pittsburgh.”²
- Pitt.edu website: “The Pitt Biospecimen Core (PBC, formerly the Health Sciences Tissue Bank, HSTB)”³ “is funded and operated through a partnership between the Department of Pathology within the School of Medicine, the Office of the Senior Vice Chancellor for Health Sciences and the University of Pittsburgh Medical Center (UPMC)”⁴

¹ <https://www.nature.com/articles/s41598-020-71548-z/figures/1>

² <https://www.nature.com/articles/s41598-020-71548-z>

³ <https://ipm.pitt.edu/pitt-biospecimen-core>

⁴ <http://www.pittbiospecimencore.pitt.edu>

2) Pitt/UPMC has multiple Planned Parenthood abortion providers on staff performing abortions and trains medical students to do so.

- Pitt OB/GYN Annual Report 2019: The most recent annual report of the Pitt OB/GYN Department lists Planned Parenthood of Western Pennsylvania as one of the Department’s “contracted care” sites, with four faculty members providing abortions for PPWP: Dr. Sharon Achilles, Dr. Beatrice Chen, Dr. Colleen Krajewski, and Dr. Audrey Lance.⁵
 - Dr. Sharon Achilles serves on PPFA’s National Medical Committee and is principal investigator for the Society of Family Planning’s Abortion Clinical Trials Network, and “Laboratory Director” for PPWP
 - Dr. Beatrice Chen is the Medical Director for PPWP⁶ and the Director of Family Planning, UPMC Magee-Womens Hospital⁷
- Pitt hosts Planned Parenthood’s Ryan Residency Training Program⁹ and Family Planning Fellowship¹⁰ for training new abortion doctors.

3) Planned Parenthood abortion providers admit on undercover camera that they provide fetal tissue to the Pitt/UPMC fetal tissue bank

- Dr. Audrey Lance at Society of Family Planning meeting:¹¹
 - Q: “Have you guys ever participated in specimen donation in the past?”
 - A: “There’s a tissue bank at Pitt that we offer patients to donate to”



717-545-0600 • 23 N. Front St., Harrisburg, PA 17101
f /pafamily @PFIPolicy pafamilycouncil

⁵ <https://www.obgyn.pitt.edu/sites/default/files/2018-2019%20Final%20Annual%20Report.pdf>

⁶ https://www.plannedparenthood.org/uploads/filer_public/4e/c6/4ec68ce5-6c93-4004-9135-5073d530720f/annual_report_draft_for_web.pdf

⁷ <https://www.obgyn.pitt.edu/people/beatrice-chen-md-mph>

⁸ <https://providers.upmc.com/provider/Beatrice+A.+Chen/1320582>

⁹ <https://ryanprogram.org/home-2/overview/ryan-program-locations/>

¹⁰ <https://societyfp.org/fellowship/>

¹¹ <https://www.centerformedicalprogress.org/wp-content/uploads/2019/06/PPWPTranscript.pdf>